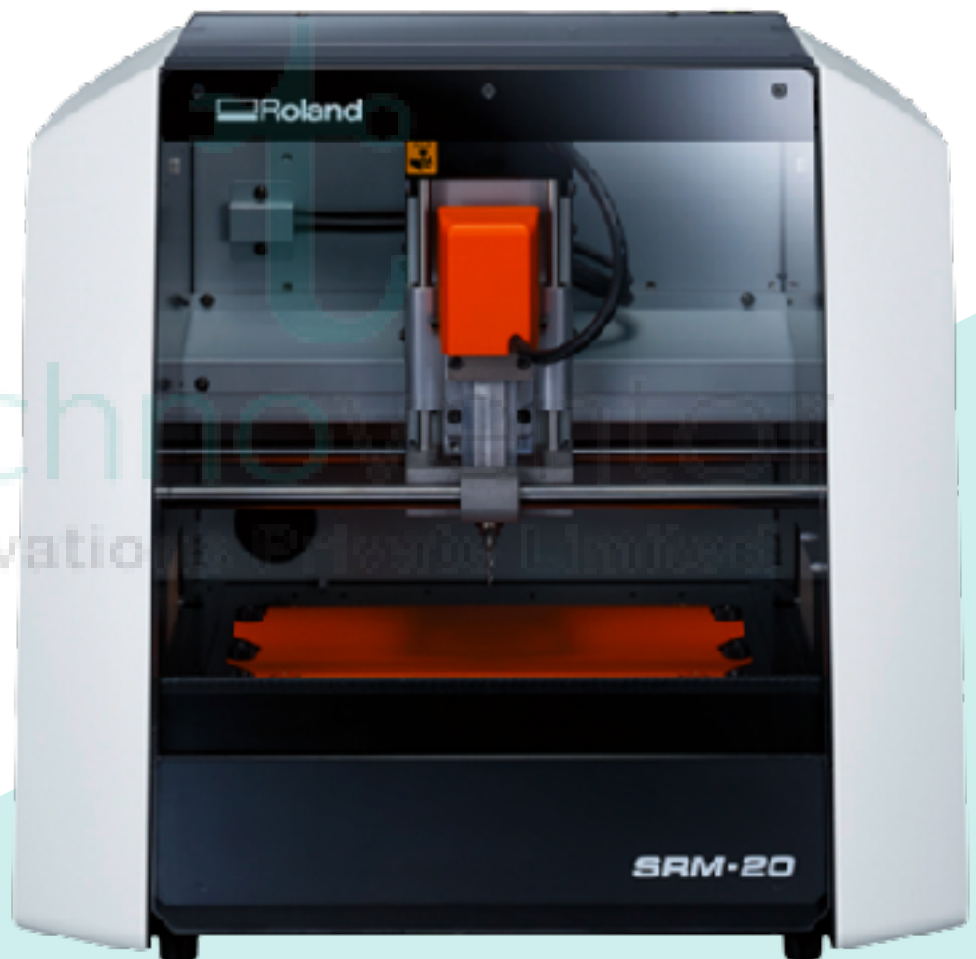


Quick start guide

Milling Machine

Rolland SRM 20 Milling Machine



 **Roland**

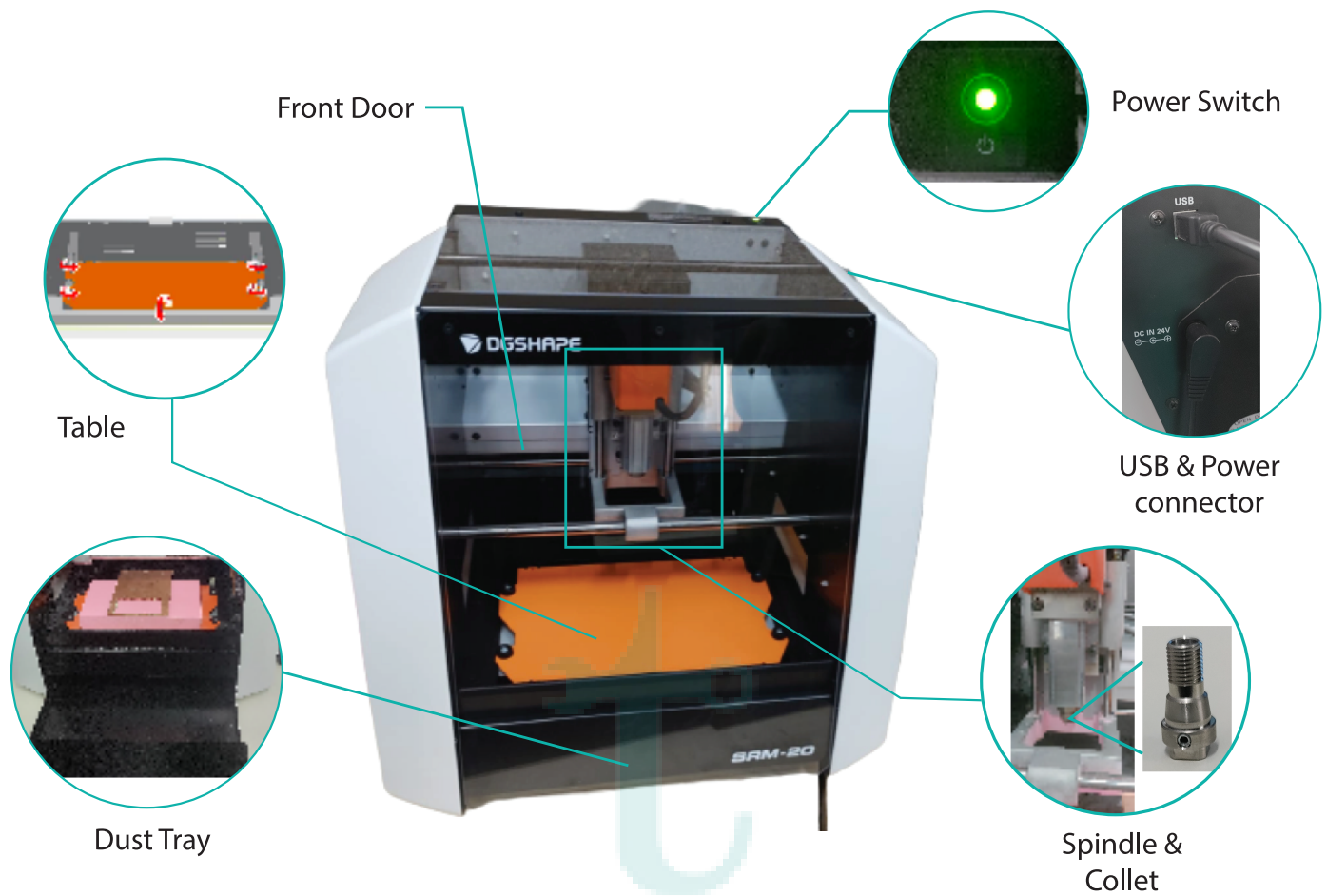
Scan to Download the Software


Technoventor
Innovations Private Limited









www.technoventor.com

Machine Appearance & Accessories



Technoventor
Tools
Innovations Private Limited

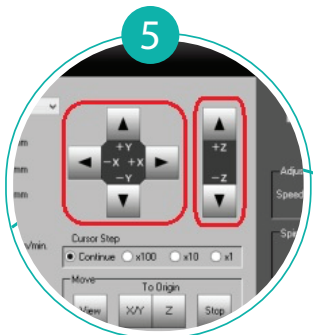
 Collet (1)	 Cutting Tool (1)	 Hexagonal Wrench Small (1)
 Set Screw (1)	 Spanner L/S (one for each)	 Double-stick Tape (1)

Operation

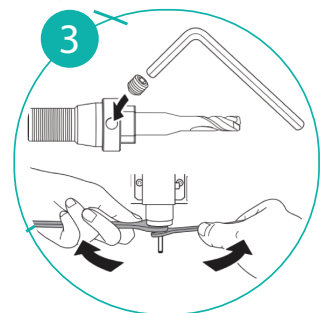
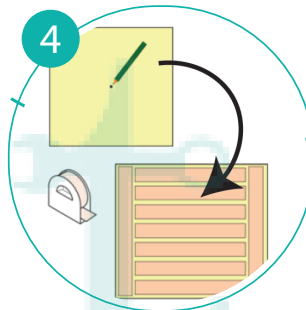
Switch ON the machine.



Open V panel for SRM-20 for User Coordinate System for bit's positioning.

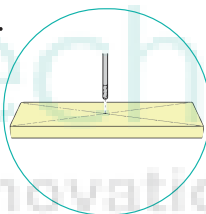


Mark the location and stick double sided tape.

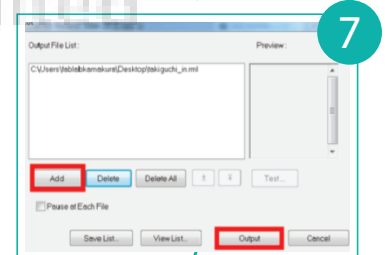


Insert a cutting tool in a collet. Tighten the set screw with hexagonal wrench.

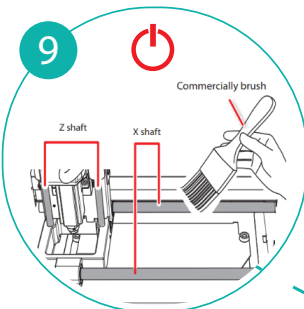
Click the [X/Yarrows] to set the origin of bit. Carefully click the [Z arrow] and lower the bit until it is slightly touching to the surface of a board.



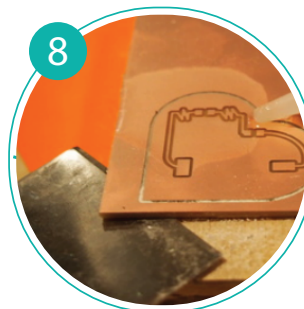
Import your file to SRM-20 by clicking [Cut] button.



Click [Add] and select the [.rml file] for the circuit's traces. When the [Output] button is pressed, the machine will begin to mill.



Switch off the machine after cutting operation and perform the cleaning of a machine.



When the milling is done, open the front door and remove workpiece using spatula.

DO's

- ✓ When starting the machine, make sure that the front cover is closed.
- ✓ Handle it carefully & install in a well-ventilated location.
- ✓ Use proper recommended cutting material for the smooth operations.
- ✓ Put your cutting object on proper material Jig to fix in a determined range.
- ✓ Always unplug the power cord when attaching or removing parts and optional parts.
- ✓ Use a proper cutting tool suitable for the material and the cutting method.
- ✓ Carefully clean away cutting waste.

DONT's

- ✗ Never needlessly touch anywhere in machine during operation.
- ✗ Never attempt to move the spindle head and table by hand with undue force.
- ✗ Never use a pneumatic blower.
- ✗ Never use gasoline, alcohol, thinner, or any other flammable material for cleaning to avoid fire.
- ✗ Never allow children to use this machine by themselves.
- ✗ Don't touch cutting tools and spindle with fingers after immediate operation, as it becomes hot.
- ✗ Never operate machine in unattended

Machine Specifications

Cutable material	Resins such as chemical wood and modeling wax (metal not supported), substrates for machining
X, Y, and Z operation strokes	203.2 (X) x 152.4 (Y) x 60.5 (Z) mm (8 (X) x 6 (Y) x 2.38 (Z) inches)
Distance from collet tip to table	Maximum 130.75 mm (5.15 inches)
Table size	232.2 (X) x 156.6 (Y) mm (9.14 (X) x 6.17 (Y) inches
Loadable workpiece weight	2 kg (4.4 lbs)
Operating speed	6 ~ 1800 mm/min (0.24 ~ 70.87 inches/min)
Mechanical resolution	0.000998594 mm/step (0.0000393 inches/step)
Maximum spindle rotation	7,000 rpm
Cutting tool chuck	Collet method
Control command sets	RML-1, NC code
Power consumption	Approx. 55 W

For any queries contact:

✉ service@technoventor.com

☎ 8828294964 / 7304419928